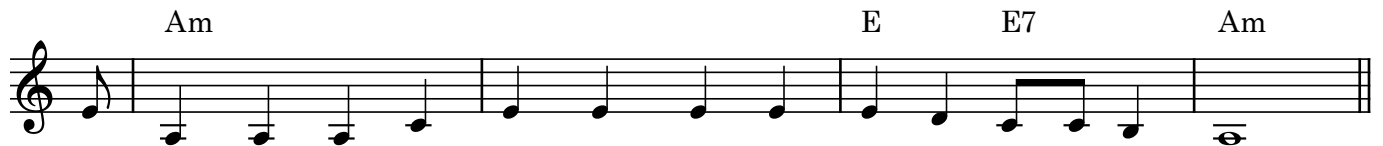


Soon May the Wellerman Come

Shanty Neuseeland



1. There once was a ship that put to sea, The name of that ship was the Bil - ly of Tea



The winds blew hard, her bow dipped down, Oh blow, me bul - ly boys, blow!

Refrain



Soon may the Wel - ler - man come to bring us su - gar and tea and rum.



One day, when the ton - guin' is done, We'll take our leave and go.

2. He had not been two weeks from shore
When down on her a right whale bore.
The captain called all hands and swore
He'd take that whale in tow.

(REFRAIN)

3. Before the boat had hit the water
The whale's tail came up and caught her.
All hands to the side, harpooned and fought her,
When she dived down below.

(REFRAIN)

4. No line was cut, no whale was freed,
An' the captain's mind was not on greed!
But he belonged to the Whaleman's creed
She took that ship in tow

(REFRAIN)

5. For forty days or even more,
the line went slack then tight once more,
All boats were lost, there were only four
and still that whale did go.

(REFRAIN)

6. As far as I've heard, the fight's still on,
The line's not cut, and the whale's not gone!
The Wellerman makes his regular call
to encourage the captain, crew and all!

(REFRAIN 2X)